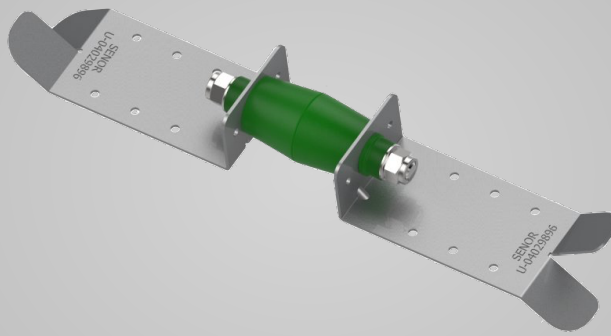


dBA WD-P

Partition Wall
Decoupler



Description

The dBA WD-P is an anti-vibration double-wall decoupler. This mounting is designed to prevent structural noise transmission and to provide maximum stability for partition walls. The multiple holes in the steel bracket make it adjustable to different desired air gaps between partitions and the cuts on both edges may be fastened to ceramic walls to increase the tensile strength, hence improving wall stability.

Specifications

Material:
**Elastomeric Compound
and Galvanised Steel**

Dimensions:
284 x 50 x 37 (mm)

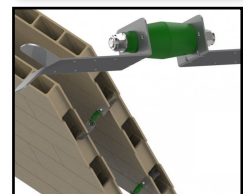
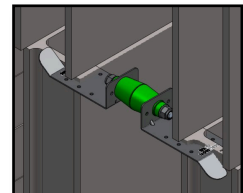
Installation:
Mechanical

Technical Information

	Value	Standard
Dimensions [mm]	284 x 50 x 37	-
Thickness [mm]	1,5	-
Fire Rate	✓	UNE 37-507-88

Compression Load [kg]	Min	15
	Max	40
Traction Load [kg]	Min	5
	Max	10

Applications



hello@artnovion.com
www.artnovion.com