



GlueArt 2.0 Instant Fix Kit

Fixing Systems

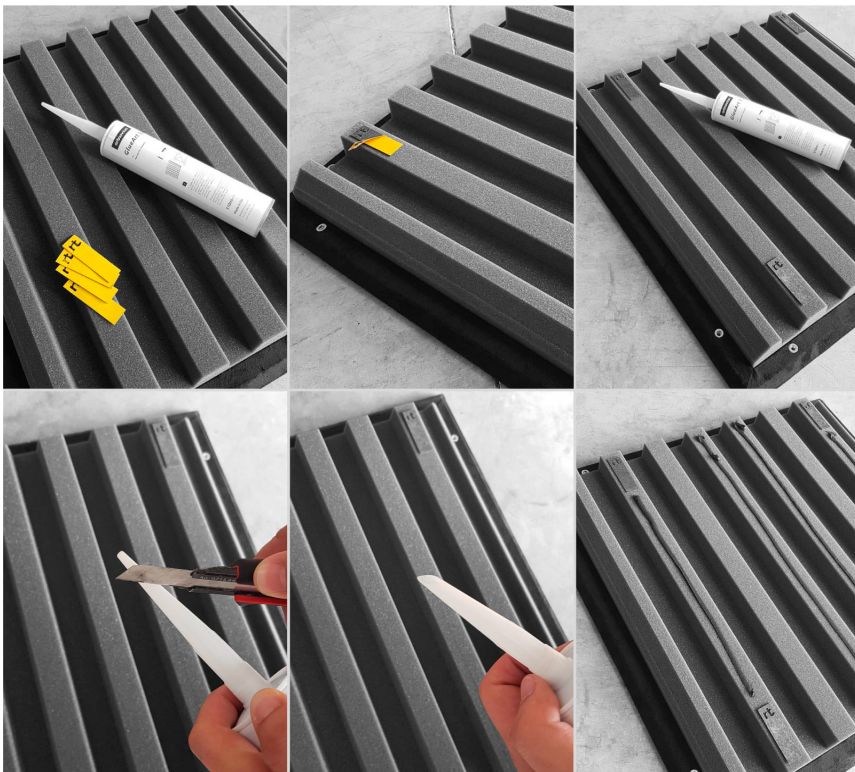
RESIDENTIAL & Hi Fi
PRO AUDIO & STUDIO

Specifications

Each Kit contains 3 tubes and 96 double sided adhesive strips.

The Kit installs either 24 standard panels (595x595mm) or 48 dimi panels (595x297mm).

Glueart 2.0 Instant Fix Kit is a kit designed to facilitate fixing panels using Glueart 2.0. Panels are fixed using a combination of extra-strong double sided adhesive, that secure even heavier panels in place whilst the adhesive dries. The kit comes with 3 tubes of Glueart 2.0 and 96 double sided adhesive strips, enough to install 24 panels.



hello@artnovion.com
www.artnovion.com



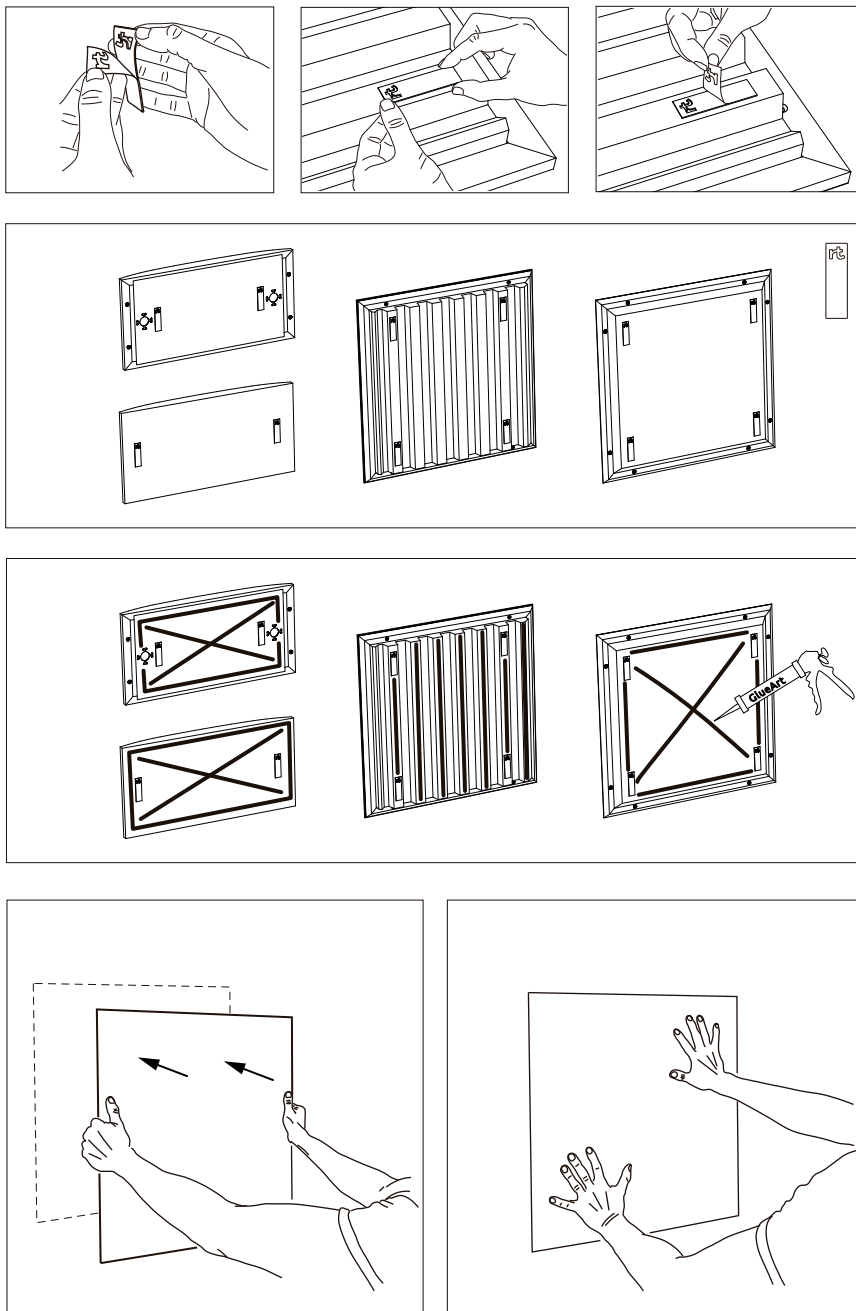
GlueArt 2.0 Instant Fix Kit

Fixing Systems
RESIDENTIAL & Hi Fi
PRO AUDIO & STUDIO

Instructions

1. Apply extra-strong double sided adhesive on the panel.
2. Apply the adhesive to the back of the panel with a pressure gun. If applying to an extremely irregular surface, apply adhesive to both the panel and the target wall area.
3. Place the panel on the wall in the correct position for a maximum of 10 minutes after applying the glue.

Avoid making any adjustments to the panel after gluing so as not to reduce the glue force. The cure time depends on the application thickness, temperature, and air humidity.



hello@artnovion.com
www.artnovion.com